

BURNERS

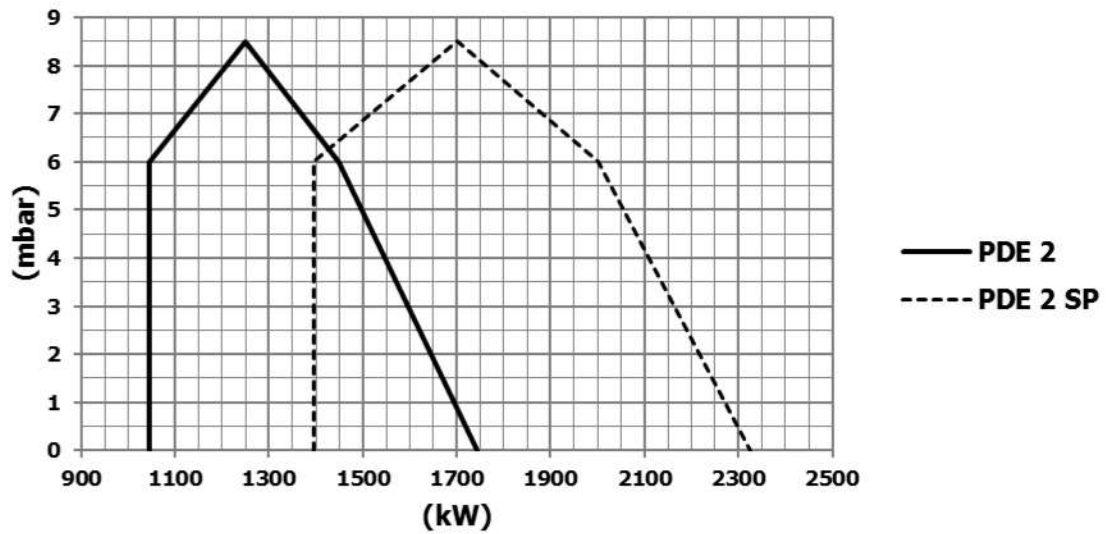


ALL THERM

OIL, GAS AND DUAL: UP TO 5M KCAL/H
THIRD WORLDWIDE INDUSTRIAL GROUP
TUV INTERNATIONAL CERTIFICACION

2 YEAR GUARANTY

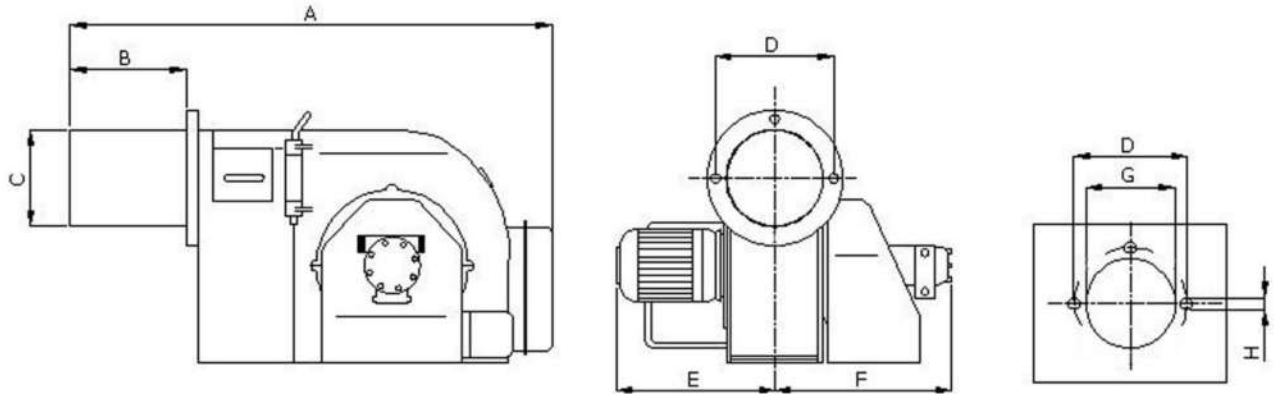
**PDE 2
PDE 2 SP**

Burner Performance Chart


	Function	Fuel	Oil Consumption kg/h	Heating Capacity kW
PDE 2	Two Stage	Light Oil	90-150	1046-1744
PDE 2 SP	Two Stage	Light Oil	120-200	1395-2325



Burner Dimensions



	A	B	C	D	E	F	G	H
PDE 2	960	220	194	305	420	390	200	M12
PDE 2 SP	960	220	219	305	420	390	225	M12

Burner Equipment	PDE 2	PDE 2 SP
Fan Motor	3 ~ 3 kW	3 ~ 4 kW
Servomotor	Conectron LKS 310	Conectron LKS 310
Control Unit	Satronic TMO 720	Satronic TMO 720
Oil Pump	Suntec AJ6AE	Suntec E7NA
Ignition Transformer	Brahma TB2S Electronic / 2×12 kV / 35 mA	Brahma TB2S Electronic / 2×12 kV / 35 mA
Oil Solenoid Valve	Rapa 1/8" (x2) & 1/4"	Rapa 1/8" (x2) & 1/4"
Flame Detector	Photo cell	Photo cell
Burner Control Panel	✓ (separated)	✓ (separated)



ALL THERM (GIBRALTAR) LTD

HEADQUARTERS :

World Trade Center
6 Bayside Road 1st Floor - Unit 1.02
GX1 1AA Gibraltar
☎ (+350) 200 60207
✉ info@alltherm.group

SALES MANAGER :

Javier *Martinez* Lesmes
C/ López Bravo 7. Naves CAM 45
09001 Burgos
☎ (+34) 639 324 269
✉ j.martinez@alltherm.group

